



**DRAIN VALVES AND VENTILATION DEVICES**



**NON-METALLIC VENTILATION DEVICES**

- DVG** - Beige 2.75" H x 2" W
- DVC** - Beige 1" H x 1" W
- DV** - Grey 1" H x 1" W

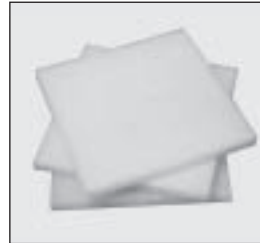


**Z-5010 - LOUVER PLATES**  
6" x 6" Ventilation Plates



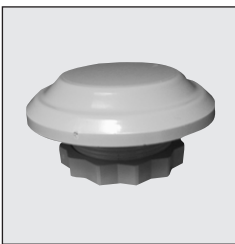
**LOUVER PLATES**  
Non Metallic - Beige  
with filter

- EFA-10** (4" x 4")
- EFA-20** (6" x 6")
- EFA-25/30** (10" x 10")
- EFA-50/60** (13" x 13")



**REPLACEMENT FILTERS**  
(5 per package)

Standard Filters	Fine Filters
<b>EFM-10</b>	<b>EFMF-10</b>
<b>EFM-20</b>	<b>EFMF-20</b>
<b>EFM-25/30</b>	<b>EFMF-25/30</b>
<b>EFM-50/60</b>	<b>EFMF-50/60</b>



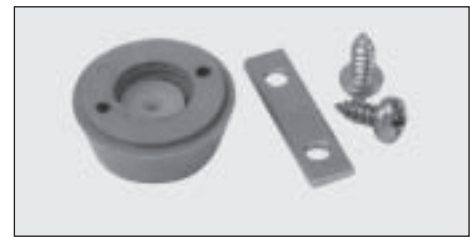
**08400.9-00**  
**Pressure Compensation Plug**  
Polycarbonate ABS – Grey  
2.58" diameter x 1.2" high



**28400.0-00**  
**Pressure Compensation Plug**  
Plastic PA6 – Light Grey  
2.36" diameter x 1.46" high



**28401.0-00**  
**Pressure Compensation Plug**  
Stainless Steel  
2.285" diameter x 1.22" high



**DP - DRAIN VALVE**  
Used to drain condensation  
Grey - Non Metallic 12 mm Diameter