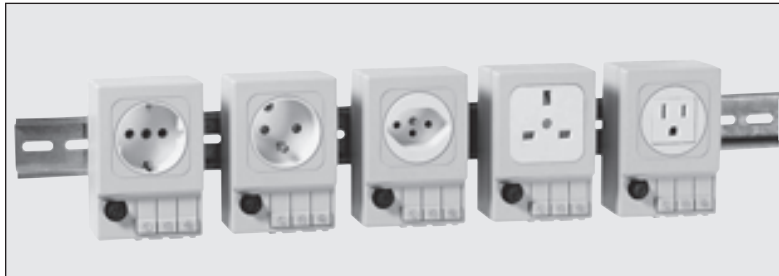


# Recepticals



## DIN RECEPTACLE

DIN rail mounted power socket, with fuse 6.3A250V. Pressure clamp connections for easy and quick wiring. Schuko, other country sockets available upon request. UL/CSA Recognized Component.

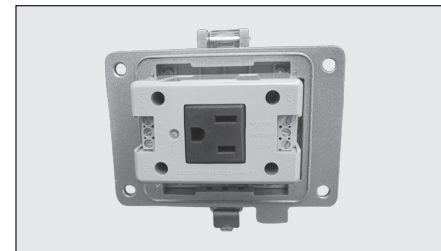
Technical Data	
Fuse Size	∅ 5 x 20mm, rated 6.3 A
Mounting	Clip for 35mm DIN rail
Connection	3 x AWG 20-16 (0.5 – 1.5mm <sup>2</sup> )
Dimensions	3.6 x 2.4 x 1.9" (92 x 62 x 48mm)

Country	Part No.		Operating Voltage
	With 6.3A Fuse	No Fuse	
USA/Canada	03504.0-00	03504.0-01	125 VAC
Germany	03500.0-00	03500.0-01	125 VAC
France	03501.0-00	03501.0-01	250 VAC
Switzerland	03502.0-00	03502.0-01	250 VAC
UK	03503.0-00	03503.0-01	250 VAC
Italy	03505.0-00	03505.0-01	250 VAC



## INTERFACE RECEPTACLE

Part No.	Description
P-XX-B3-R0	NEMA 12/4
P-XX-B2-R0	NEMA 4X



## DUAL SIDE GFCI RECEPTICAL

Testing and resetting a GFCI inside an enclosure is impractical. Our new **INside-OUTlet** is a practical and cost-efficient solution.

Part No.	Description
H-RF0-K3-U400	NEMA 12/4
H-RF15-K3-U400	NEMA 12/4 with 15A CB
H-RF20-K3-U400	NEMA 12/4 with 20A CB
H-RF0-K2-U400	NEMA 4X
H-RF15-K2-U400	NEMA 4X with 15A CB
H-RF20-K2-U400	NEMA 4X with 20A CB