



# NEMA/EEMAC Type 4, 4X E Series Accessories

## LOCKING SCREWS TO FIX COVERS



**SLOTTED HEAD SCREWS**  
SD 13 - For type L & LO (4 per pack).  
SD 18/4 - (4 per pack)  
SD 18/6 - (6 per pack)



For all the enclosures except type L & LO.

(All Enclosures come complete with SD13 or SD18 Screws)  
(These are for replacement use)

## MANUAL - THUMB SCREWS



**HS18** - For all the enclosures except type L & LO. (1 per package)



**TS18** - 1 Triangular head metal screw  
**PTT-O** - 1 Triangular head non-metallic screw  
For all enclosures except E1813, E2713 & E2718LO

**LLT** - Key must be ordered separately

## TRIANGULAR KEY



**LLT** - For triangular - head screws.

## LOCK & HINGE KITS



**CLL** - Kit contains 2 hinges & the lock set.

## FLEXIBLE HINGE SCREWS

Flexible hinge. Each have a flexible cord which functions as a hinge & holds the cover to the box when it is opened.



**HSD18**  
Slotted head screw



**HHS 18**  
Manual thumb screw  
(1 unit per package)

The HSD 18 & HHS 18 are for use on all enclosures except type L & LO.

## WALL MOUNTING BRACKETS



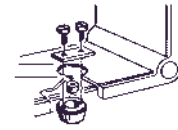
**SUPPLIED 4 PER SET**  
**CB 13** - Chromium Plated.  
**CB-13IN** - 304 stainless steel.  
For E1813L & LO & E2713L & LO enclosures.

**CB 18** - Chromium Plated  
**CB 18IN** - 304 Stainless Steel.  
Not for use with E1813L & LO & E2713L & LO enclosures.

## DRAIN VALVE



**DP** - Used for draining condensation.



## VENTILATION VALVE

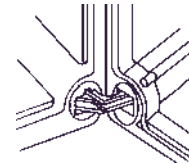


**DV** - Allows air circulation inside the box to prevent condensation. Suitable for all boxes. Hole  $\varnothing$  19 mm.

## INTERNAL HINGE



**KI** - (1 Per Package)  
(For all enclosures except type L & LO.)  
(Must order Loctite Cement for bonding)  
**USE LOCTITE 495 CEMENT**  
to Bond Hinge to Enclosure.



## EXTERNAL HINGE



**KE - RIGID HINGE**  
(2 hinges per package.)



**KK - JOINT HINGE**  
Not for use with type L & LO, or enclosures with depth flanges.  
(2 hinges per package.)