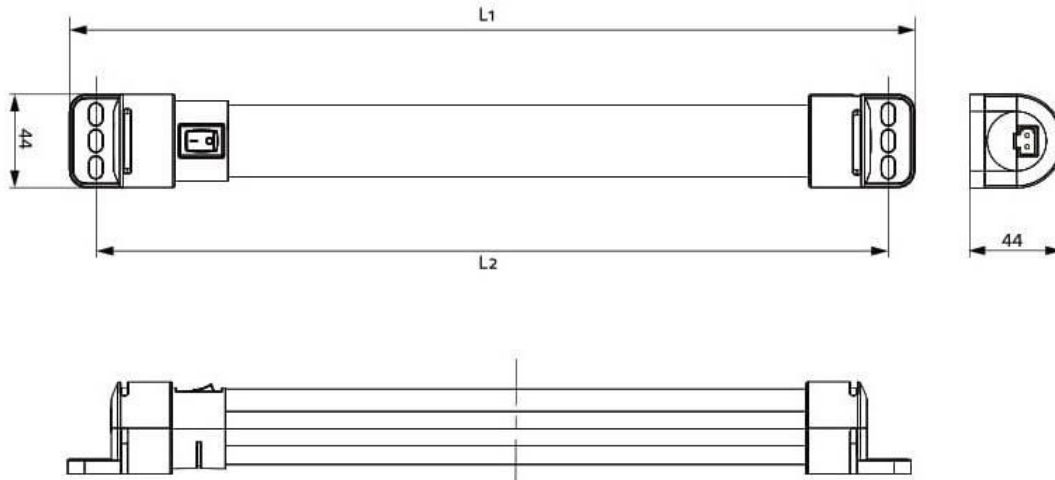


LED Lighting



**LED LIGHT
AC 100-240V**

| 400mm (15.75") | | 600mm (23.62") | | Switch |
|-----------------|----------------|-----------------|----------------|-----------------|
| Magnet Mounting | Screw Mounting | Magnet Mounting | Screw Mounting | |
| 02100.0-30 | 02100.0-00 | 02200.0-30 | 02200.0-00 | On / Off switch |
| 02110.0-30 | 02110.0-00 | 02210.0-30 | 02210.0-00 | Motion sensor |
| 02120.0-30 | 02120.0-00 | 02220.0-30 | 02220.0-00 | Door Switch |



Technical Data

| | |
|----------------------------------|---------------------------------------------------------------------------------|
| Power consumption | Max. 11 W / 16 W |
| Operating voltage | AC 100 - 240 V, 50/60 Hz (min. AC 90 V, max. AC 265 V) |
| Luminous flux | 1,080 Lm/1,730 Lm |
| Lamp type | LED, angle of radiation 120°, light color: daylight, color temperature: 6.500 K |
| Service life | 60,000 h at +20 °C (+68 °F) |
| Connection | 2-pole connector with snap lock, AC: max. 2,5 A / AC 240 V, color: white |
| Mounting | Magnet fixing or screw fixing (M5), torque 2 Nm max. |
| Casing | Plastic, translucent |
| Weight | Approx. 0.2 kg/0.3 kg |
| Operating/Storage temperature | -30 to +40 °C (-22 to +104 °F) / -40 to +85 °C (-40 to +185 °F) |
| Operating/Storage humidity | Max. 90 % RH (non-condensing) |
| Protection type/Protection class | IP20 / II (double insulated) |



POWER INPUT / DOOR SWITCH CABLE

| Part No. | Model | Voltage Type | Colour | Used For | Length | Approvals |
|----------|--------------------------------|--------------|--------|------------------------------|--------|-------------|
| 244357 | Connection cable 2 x AWG 16 | AC | White | Power input / Door switch | 2m | VDE + UL |



EXTENSION CABLE FOR DAISY CHAIN

| Part No. | Model | Voltage Type | Colour | Used For | Length | Approvals |
|----------|-------------------------------|--------------|--------|----------------|--------|-------------|
| 244359 | Extension cable 2 x AWG 16 | AC | White | Daisy chain | 1m | VDE + UL |



**FEMALE / MALE CONNECTORS
WHEN PROVIDING YOUR OWN CABLE**

| Part No. | Model | Voltage Type | Colour | Used For | Length | Approvals |
|----------|--------|--------------|--------|------------------------------|------------|-----------|
| 264057 | Female | AC | White | Power input / Door switch | 0.5 - 2.5m | VDE + UL |
| 264058 | Male | AC | White | Power Output | 0.5 - 2.5m | VDE + UL |

DOOR SWITCH

| Part No. | Description |
|----------|---------------------|
| DSW | Door Switch |
| DSWB | Door Switch Bracket |

