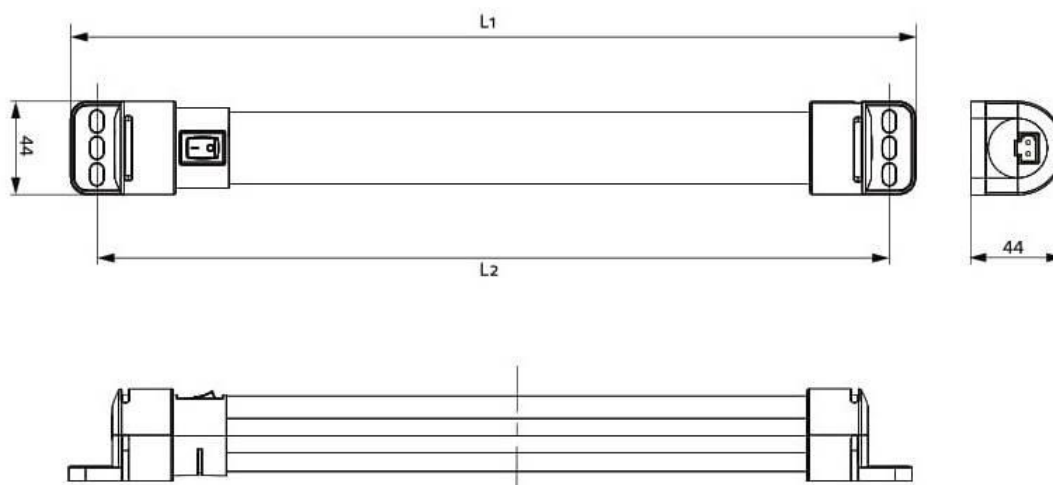


# LED Lighting



**LED LIGHT  
AC 100-240V**

400mm (15.75")		600mm (23.62")		Switch
Magnet Fixing	Screw Fixing	Magnet Fixing	Screw Fixing	
02100.0-30	02100.0-00	02200.0-30	02200.0-00	On / Off switch
02110.0-30	02110.0-00	02210.0-30	02210.0-00	Motion sensor
02120.0-30	02120.0-00	02220.0-30	02220.0-00	Door Switch



## Technical Data

Power consumption	Max. 11 W / 16 W
Operating voltage	AC 100 - 240 V, 50/60 Hz (min. AC 90 V, max. AC 265 V)
Luminous flux	1,080 Lm/1,730 Lm
Lamp type	LED, angle of radiation 120°, light color: daylight, color temperature: 6.500 K
Service life	60,000 h at +20 °C (+68 °F)
Connection	2-pole connector with snap lock, AC: max. 2,5 A / AC 240 V, color: white
Mounting	Magnet fixing or screw fixing (M5), torque 2 Nm max.
Casing	Plastic, translucent
Weight	Approx. 0.2 kg/0.3 kg
Operating/Storage temperature	-30 to +40 °C (-22 to +104 °F) / -40 to +85 °C (-40 to +185 °F)
Operating/Storage humidity	Max. 90 % RH (non-condensing)
Protection type/Protection class	IP20 / II (double insulated)



**POWER INPUT / DOOR SWITCH CABLE**

Part No.	Model	Voltage Type	Colour	Used For	Length	Approvals
244357	Connection cable 2 x AWG 16	AC	White	Power input / Door switch	2m	VDE + UL



**EXTENSION CABLE FOR DAISY CHAIN**

Part No.	Model	Voltage Type	Colour	Used For	Length	Approvals
244359	Extension cable 2 x AWG 16	AC	White	Daisy chain	1m	VDE + UL



**FEMALE / MALE CONNECTORS  
WHEN PROVIDING YOUR OWN CABLE**

Part No.	Model	Voltage Type	Colour	Used For	Length	Approvals
264057	Female	AC	White	Power input / Door switch	0.5 - 2.5m	VDE + UL
264058	Male	AC	White	Power Output	0.5 - 2.5m	VDE + UL

**DOOR SWITCH**

Part No.	Description
ADSW-01	Door switch
DSW-01	Eldon door switch

