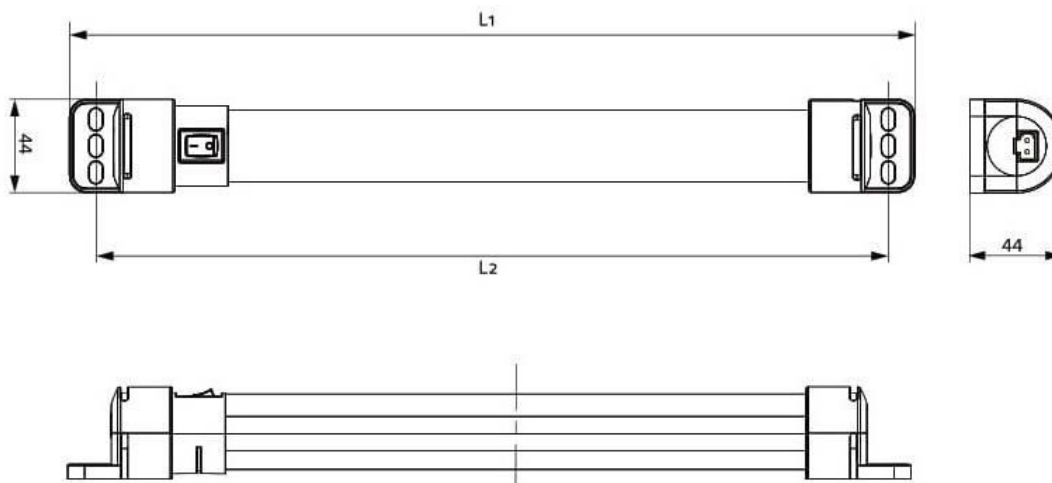


# LED Lighting



**LED LIGHT  
AC 100-240V**

| 400mm (15.75") |              | 600mm (23.62") |              | Switch          |
|----------------|--------------|----------------|--------------|-----------------|
| Magnet Fixing  | Screw Fixing | Magnet Fixing  | Screw Fixing |                 |
| 02100.0-30     | 02100.0-00   | 02200.0-30     | 02200.0-00   | On / Off switch |
| 02110.0-30     | 02110.0-00   | 02210.0-30     | 02210.0-00   | Motion sensor   |
| 02120.0-30     | 02120.0-00   | 02220.0-30     | 02220.0-00   | Door Switch     |



## Technical Data

|                                  |   |
|----------------------------------|---|
| Power consumption                | Max. 11 W / 16 W  |
| Operating voltage                | AC 100 - 240 V, 50/60 Hz (min. AC 90 V, max. AC 265 V)                          |
| Luminous flux                    | 1,080 Lm/1,730 Lm   |
| Lamp type                        | LED, angle of radiation 120°, light color: daylight, color temperature: 6.500 K |
| Service life                     | 60,000 h at +20 °C (+68 °F)   |
| Connection                       | 2-pole connector with snap lock, AC: max. 2,5 A / AC 240 V, color: white        |
| Mounting                         | Magnet fixing or screw fixing (M5), torque 2 Nm max.                            |
| Casing                           | Plastic, translucent  |
| Weight                           | Approx. 0.2 kg/0.3 kg   |
| Operating/Storage temperature    | -30 to +40 °C (-22 to +104 °F) / -40 to +85 °C (-40 to +185 °F)                 |
| Operating/Storage humidity       | Max. 90 % RH (non-condensing)   |
| Protection type/Protection class | IP20 / II (double insulated)  |



**Ralston**  
Metal Products Limited

**You create the need.  
We customize the solution.**



**POWER INPUT / DOOR SWITCH CABLE**

| Part No. | Model                          | Voltage Type | Colour | Used For                     | Length | Approvals   |
|----------|--------------------------------|--------------|--------|------------------------------|--------|-------------|
| 244357   | Connection cable<br>2 x AWG 16 | AC           | White  | Power input /<br>Door switch | 2m     | VDE +<br>UL |



**EXTENSION CABLE FOR DAISY CHAIN**

| Part No. | Model                         | Voltage Type | Colour | Used For       | Length | Approvals   |
|----------|-------------------------------|--------------|--------|----------------|--------|-------------|
| 244359   | Extension cable<br>2 x AWG 16 | AC           | White  | Daisy<br>chain | 1m     | VDE +<br>UL |



**FEMALE / MALE CONNECTORS  
WHEN PROVIDING YOUR OWN CABLE**

| Part No. | Model  | Voltage Type | Colour | Used For                     | Length     | Approvals |
|----------|--------|--------------|--------|------------------------------|------------|-----------|
| 264057   | Female | AC           | White  | Power input /<br>Door switch | 0.5 - 2.5m | VDE + UL  |
| 264058   | Male   | AC           | White  | Power Output                 | 0.5 - 2.5m | VDE + UL  |

**DOOR SWITCH**

| Part No. | Description         |
|----------|---------------------|
| DSW      | Door Switch         |
| DSWB     | Door Switch Bracket |

