



EC Console Accessories

BASE PLINTHS

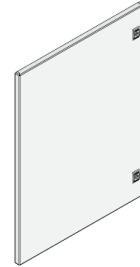
100mm (4") high.
RAL-7009 polyester
powder paint finish.

FOR EC SERIES



Part No.	For Enclosure	
	Width	Depth
P-0641	600	400
P-0841	800	400
P-1041	1000	400
P-1241	1200	400
P-1641	1600	400

OPTIONAL REAR DOOR FOR BASE UNIT



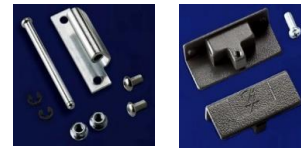
Part No.	For Enclosure Width (mm)
ECRD-600	600
ECRD-800	800
ECRD-1000	1000
*ECRD-1200	1200
*ECRD-1600	1600

*Includes left and right door

FOR EC 3 PIECE CONSOLE

Part No.	For Enclosure	
	Width	Depth
P-0651	600	500
P-0851	800	500
P-1051	1000	500
P-1251	1200	500
P-1651	1600	500

REAR DOOR MOUNTING



Part No.	Description
EDH-01	Body hinge & pin
EDH-02	Door section

*2 of each required per door

COVER PLATE FOR TOP OPENING



Base Part No.	Desk Part No.	For Enclosure Width (mm)
ECB-600C	ECD-600C	600mm
ECB-800C	ECD-800C	800mm
ECB-1000C	ECD-1000C	1000mm
ECB-1200C	ECD-1200C	1200mm
ECB-1600C	ECD-1600C	1600mm

ADDITIONAL PANEL FOR BASE SECTION



Part No.	Enclosure Width (mm)
ECP-600	600
ECP-800	800
ECP-1000	1000
ECP-1200	1200
ECP-1600	1600

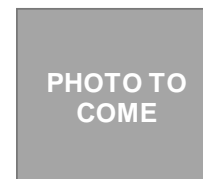
CASTERS & LEVELING FEET



Part No.	Description
CST-01	4 Castors, 2 with brakes
LF-01	4 Self leveling feet
*RH-01	Required hardware

*RH-01 requires machining

MOUNTING HARDWARE FOR ECP



Part No.
ECPH